

REV	REVISION DESCRIPTION	DWN	APP	REV DATE

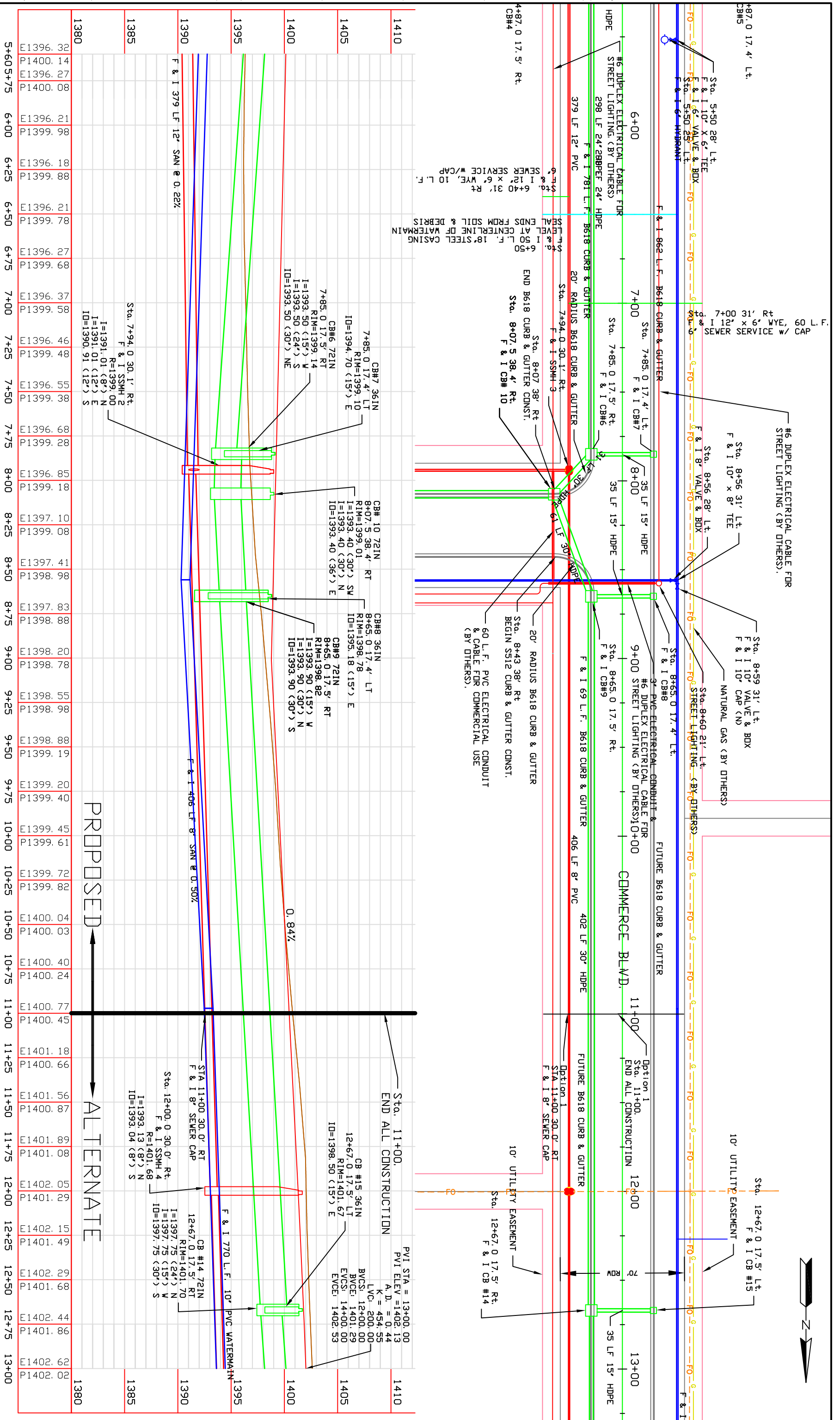
  

<p>Wenck Associates, Inc. Consulting Engineers 1012 5th Avenue, Suite 18 Windom, MN 56101 Web Site: www.wenck.com (507) 831-2703 (507) 831-5271</p>	<p>DWG DATE: 6/21/2012 SCALE: 1" = 50'</p>
---	--

<p>DWN BY: DJJ CHK'D: DJJ APP'D: DJJ</p>	<p>PROJECT: City of Windom North Windom Industrial Park Improvements</p>
<p>CLIENT: City of Windom 444 9th Street Windom, MN 56101</p>	<p>SHEET TITLE: Plan &amp; Profile 410th Street</p>
<p>PROJECT NO.: 0045-38</p>	<p>SHEET NO.: CP-101</p>





1380	E1396.32	P1400.14	E1396.27	P1400.08	E1396.21	P1399.98	E1396.18	P1399.88	E1396.21	P1399.78	E1396.27	P1399.68	E1396.37	P1399.58	E1396.46	P1399.48	E1396.55	P1399.38	E1396.68	P1399.28	E1396.85	P1399.18	E1397.10	P1399.08	E1397.41	P1398.98	E1397.83	P1398.88	E1398.20	P1398.78	E1398.55	P1398.98	E1398.88	P1399.19	E1399.20	P1399.40	E1399.45	P1399.61	E1399.72	P1399.82	E1400.04	P1400.03	E1400.40	P1400.24	E1400.77	P1400.45	E1401.18	P1400.66	E1401.56	P1400.87	E1401.89	P1401.08	E1402.05	P1401.29	E1402.15	P1401.49	E1402.29	P1401.69	E1402.44	P1401.86	E1402.62	P1402.02
------	----------	----------	----------	----------	----------	----------	----------	----------	----------	----------	----------	----------	----------	----------	----------	----------	----------	----------	----------	----------	----------	----------	----------	----------	----------	----------	----------	----------	----------	----------	----------	----------	----------	----------	----------	----------	----------	----------	----------	----------	----------	----------	----------	----------	----------	----------	----------	----------	----------	----------	----------	----------	----------	----------	----------	----------	----------	----------	----------	----------	----------	----------

REV REVISION DESCRIPTION DWN APP REV DATE

SCALE 1" = 50'

DWG DATE 1/28/2013

PROJECT: North Windom Industrial Park Improvements

CITY: City of Windom

CLIENT: City of Windom, 444 9th Street, Windom, MN 56101

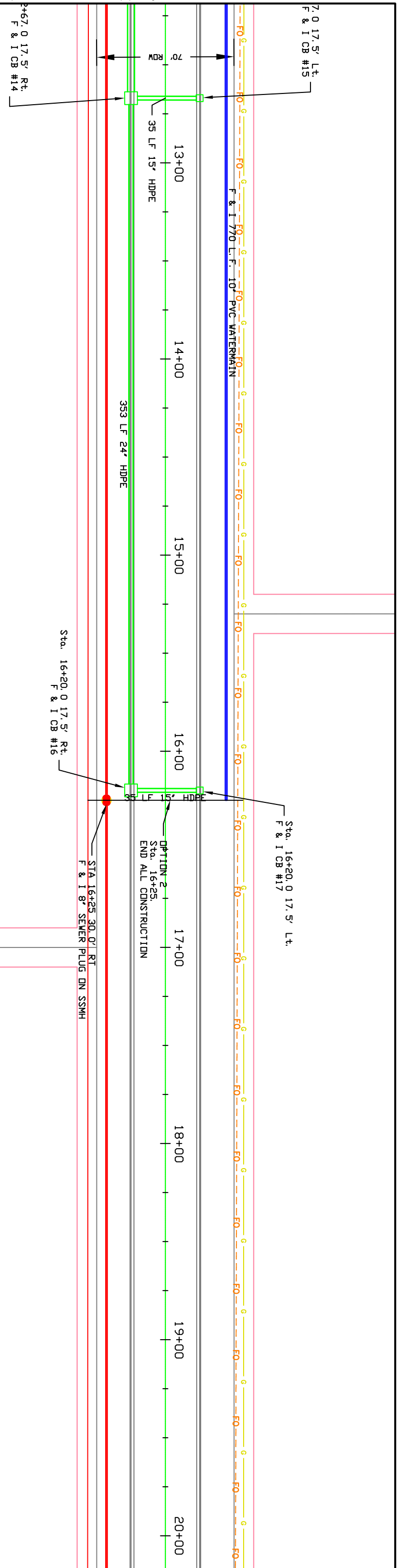
SHEET TITLE: Plan & Profile Commerce Blvd.

PROJECT NO.: 0045-38

SHEET NO.: CP-202

Wenck Associates, Inc.  
Consulting Engineers

1012 5th Avenue, Suite 18  
Windom, MN 56101  
(507) 831-2703  
(507) 831-5271



Station	Elevation	Station	Elevation	Station	Elevation
12+25	E1402.15	13+25	E1402.17	14+25	E1403.33
12+50	P1401.49	13+50	P1402.30	14+50	P1402.73
12+75	E1402.29	13+75	E1402.83	14+75	E1403.54
13+00	P1401.68	14+00	P1402.53	15+00	E1403.76
13+25	E1402.44	14+25	E1403.03	15+25	E1404.01
13+50	P1401.86	14+50	P1403.03	15+50	E1404.26
13+75	E1402.62	14+75	E1403.83	16+00	E1404.51
14+00	P1402.02	15+00	P1403.13	16+25	E1405.16
14+25	E1402.72	15+25	E1403.23	16+50	P1403.34
14+50	P1402.17	15+50	E1404.82	17+00	E1405.58
14+75	E1402.83	16+00	P1403.03	17+25	P1403.45
15+00	P1402.30	16+25	E1406.01	17+50	E1406.74
15+25	E1402.99	16+50	P1403.56	18+00	E1407.48
15+50	P1402.42	17+00	E1408.25	18+25	P1403.79
15+75	E1403.15	17+25	P1403.91	18+50	E1409.04
16+00	P1402.53	17+50	E1409.03	18+75	E1409.99
16+25	E1403.33	18+00	E1409.15	19+00	E1410.89
16+50	P1402.63	18+25	P1404.03	19+25	E1411.70
16+75	E1403.54	18+50	E1410.39	19+50	E1412.27
17+00	E1403.76	19+00	E1412.82	19+75	P1404.63
17+25	P1402.83	19+25	E1413.32	20+00	E1413.77
17+50	E1404.01	19+50	P1404.75		
17+75	P1402.93	19+75	E1413.59		
18+00	E1404.26		P1404.87		
18+25	E1404.51		E1413.73		
18+50	P1403.34		P1405.00		
18+75	E1405.16		E1413.77		
19+00	P1403.34		P1405.08		
19+25	E1405.58				
19+50	P1403.45				
19+75	E1406.01				
20+00	P1403.56				

REV	REVISION DESCRIPTION	DWN	APP	REV DATE

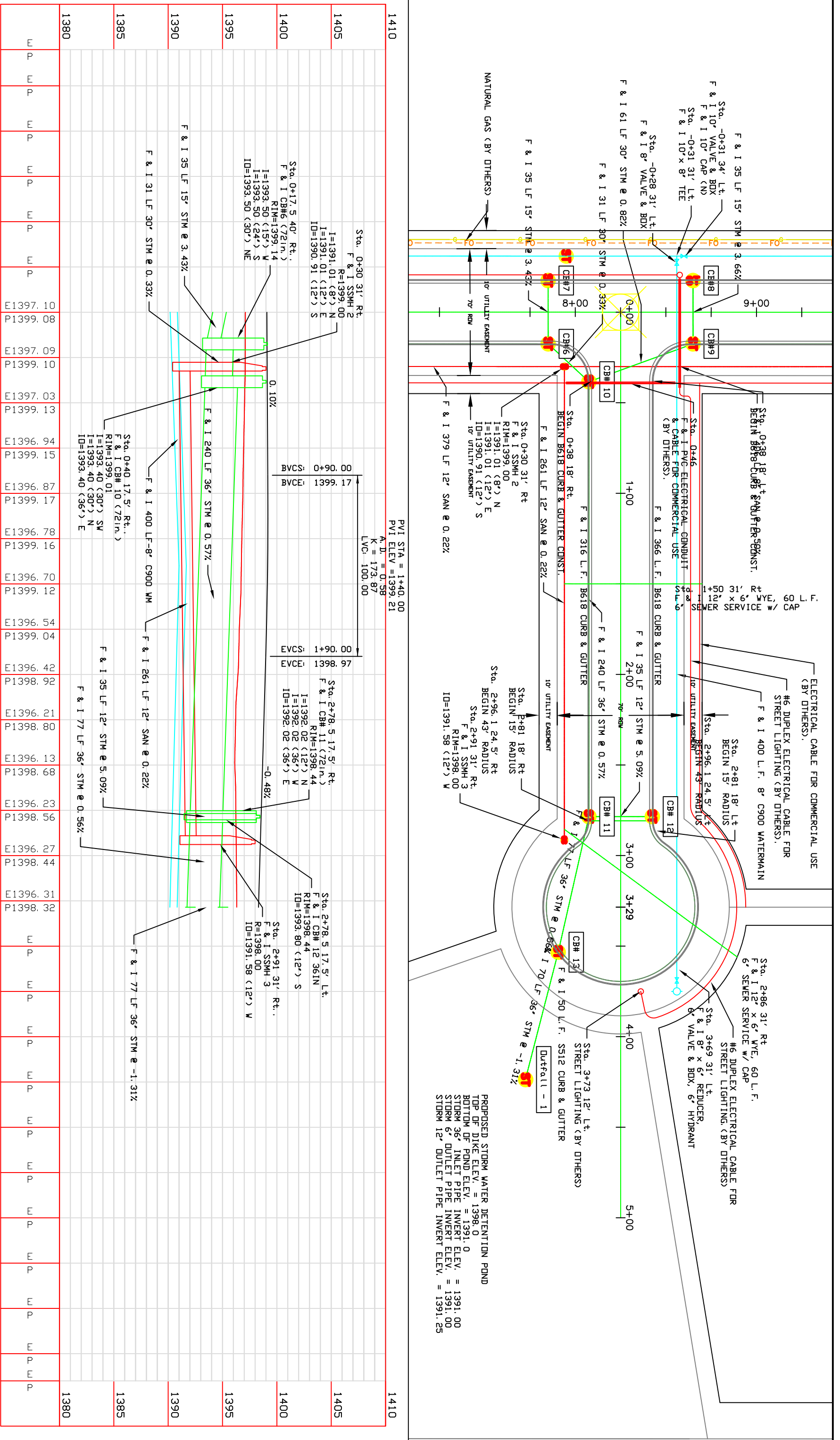
Wenck Associates, Inc.  
 Consulting Engineers  
 1012 5th Avenue, Suite 18  
 Windom, MN 56101  
 Web Site: www.wenck.com  
 (507) 831-2703  
 (507) 831-5271

DWG DATE	1/28/2013
SCALE	1" = 50'

PROJECT	City of Windom 2012 North Industrial Park
CLIENT	City of Windom 444 9th Street Windom, MN 56101

SHEET TITLE	Plan & Profile Commerce Blvd. Alt. 1
PROJECT NO.	0045-38
SHEET NO.	CP-203
REV NO.	



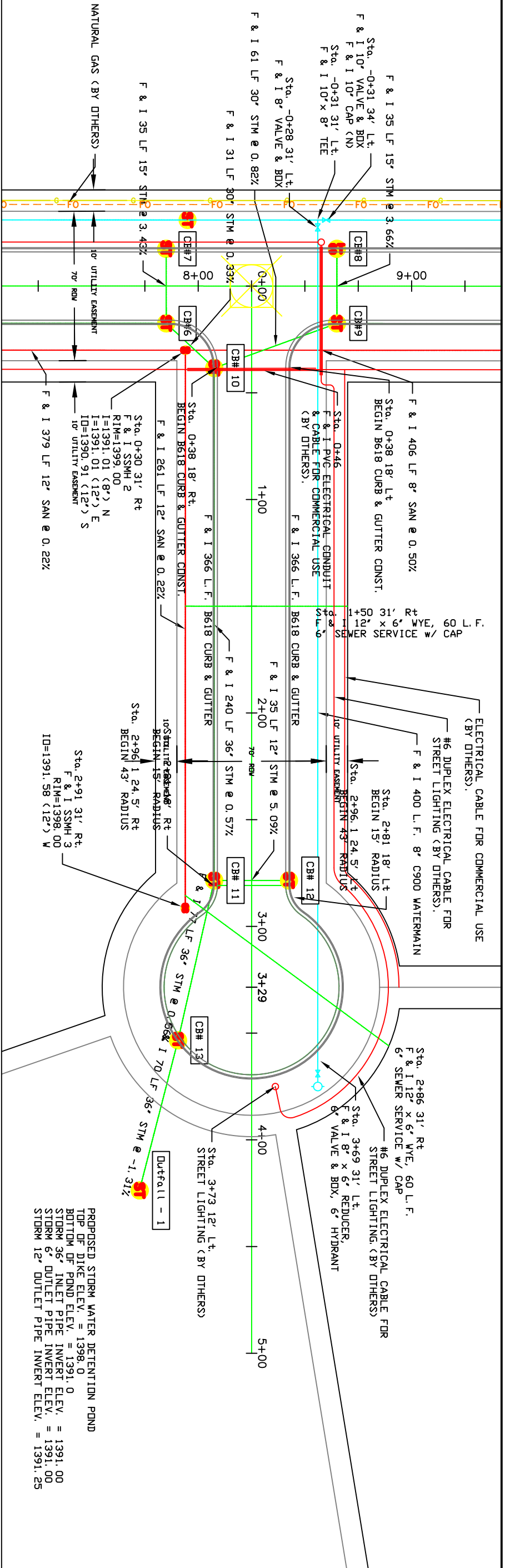


REV	REVISION DESCRIPTION	DWN	APP	REV DATE



**Wenck**

DWN BY: CHK'D TNT: DJJ APP'D: DJJ	PROJECT: City of Windom North Windom Industrial Park Improvements	SHEET TITLE: Plan & Profile Trotter Court
DWG DATE: 1/28/2013 SCALE: 1" = 50'	CLIENT: City of Windom 444 9th Street Windom, MN 56101	PROJECT NO.: 0045-38 SHEET NO.: CP-301



ELEVATION	STATION	DESCRIPTION
1410		
1405		
1400		
1395		
1390		
1385		
1410		
1405		
1400		
1395		
1390		
1385		
1410		
1405		
1400		
1395		
1390		
1385		

STATION	ELEVATION	DESCRIPTION
3+00		
3+25		
3+50	E1396.35	
	P1396.35	
3+75	E1396.45	
	P1396.45	
4+00	E1396.74	
	P1396.74	
4+25	E1397.18	
	P1397.18	
4+50	E1397.66	
	P1397.66	
4+75	E1398.21	
	P1398.21	
5+00	E1398.95	
	P1398.95	
5+25		
5+50		

Notes for Profile:

- Sta. 3+54.7 34.63' Rt F & I CB# 13 (72in.) RIM = 1397.75' I=1391.59 (36") V I=1391.59 (36") E
- Sta. 3+69 12' Lt. F & I 73 LF 36" STM TD POND INVERT 1391.00' (DUTFALL-1)
- Sta. 3+69 12' Lt. F & I 8" x 6" REDUCER, 6" VALVE & BOX, 6" HYDRANT

REV	REVISION DESCRIPTION	DWN	APP	REV DATE

**Wenck**  
Consulting Engineers

1012 5th Avenue, Suite 1B  
Windom, MN 56101

Web Site: [www.wenck.com](http://www.wenck.com)  
(507) 831-2703 (507) 831-5271

DWN BY	CHK'D	APP'D	PROJECT
TNT	DJJ	DJJ	City of Windom North Windom Industrial Park Improvements
DWG DATE	CLIENT		
1/28/2013	City of Windom 444 9th Street Windom, MN 56101		
SCALE	1" = 50'	PROJECT NO.	0045-38
		SHEET NO.	CP-302
		SHEET TITLE	Plan & Profile Trotter Court
		REV NO.	